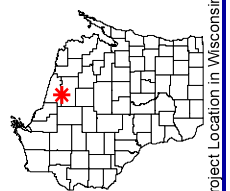
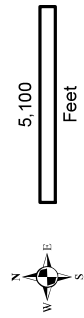
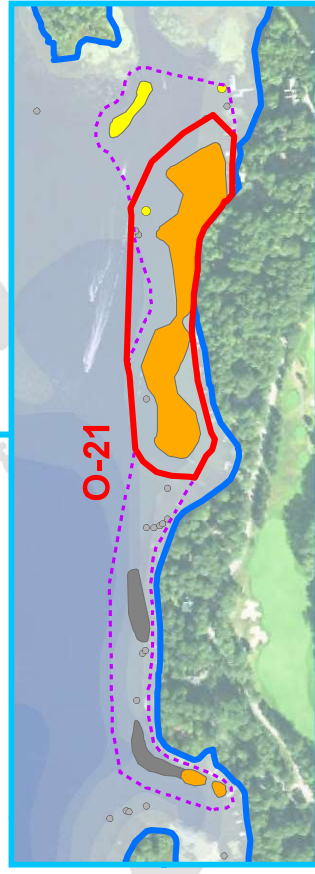
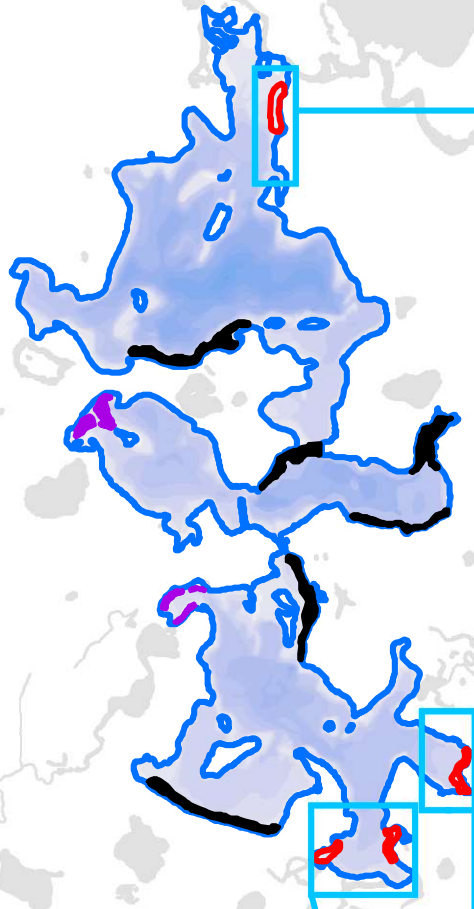
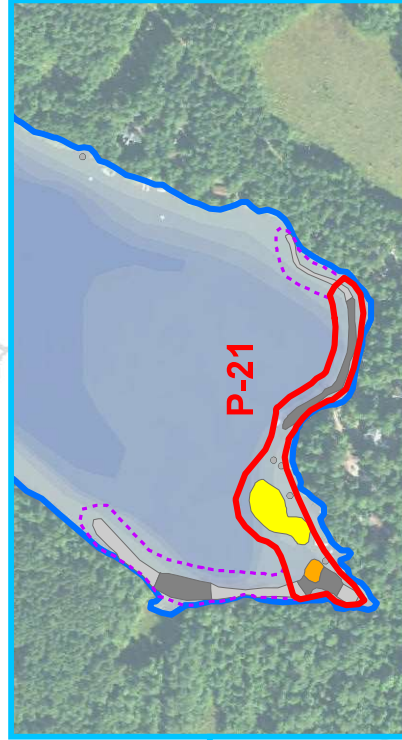
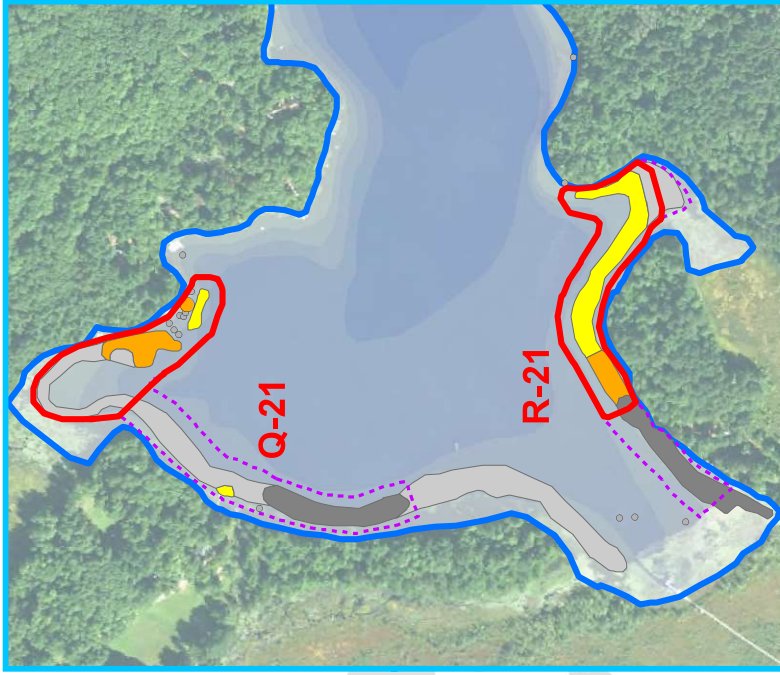


**2021 Preliminary EWM Management Strategy
ProcellaCOR Spot Treatment**

Site	Proposed Acres	Avg Depth (ft)	Volume (acre-ft)	PDU Rate (per acre-ft)	PDU Total
O-21	6.9	6.5	44.9	4.0	180
Minocqua					
	6.9		44.9		180
P-21	3.6	5.5	19.8	3.5	69
Q-21	3.3	6.5	21.5	3.5	75
R-21	3.4	4.5	15.3	3.5	54
Kawaguesaga					
	10.3		56.6		198
Total					
	17.2		101.5		378



- Legend**
- Eurasian Watermilfoil (September 14-17, 2020)**
 - Highly Scattered
 - Scattered
 - Dominant
 - Highly Dominant
 - Surface Matting
 - Herbicide Application Area**
 - Final 2019
 - Final 2020
 - Preliminary 2021
 - Plant Status**
 - Single or Few Plants
 - Clumps of Plants
 - Small Plant Colony

Onterra LLC
 Lake Management Planning
 815 Prosper Road
 De Pere, WI 54115
 920.338.8860
 www.onterra-eco.com

Sources:
 Roads and Hydro: WDNR
 Bathymetry: WDNR, 1972 - digitized by Onterra
 Orthophoto: NADP, 2018
 Aquatic Plants: Onterra, 2020
 Map Date: October 08, 2020 - EIH

Minocqua & Kawaguesaga
 Oneida, Wisconsin
**Preliminary 2021
 EWM Management
 Strategy v.2**

Project Location in Wisconsin