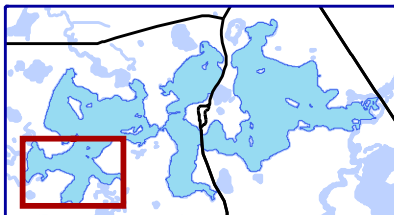




660  
Feet

**Onterra LLC**  
Lake Management Planning  
815 Prosper Road  
De Pere, WI 54115  
920.338.8860  
www.onterra-eco.com

**Sources:**  
Roads and Hydro: WDNR  
Bathymetry: WDNR, 1972 - digitized by Onterra  
Orthophoto: NAIP, 2017  
Aquatic Plants: Onterra, 2019  
**Map Date:** October 10, 2019 - EJH



#### Legend

- Highly Scattered
- Scattered
- Dominant
- Highly Dominant
- Surface Matting

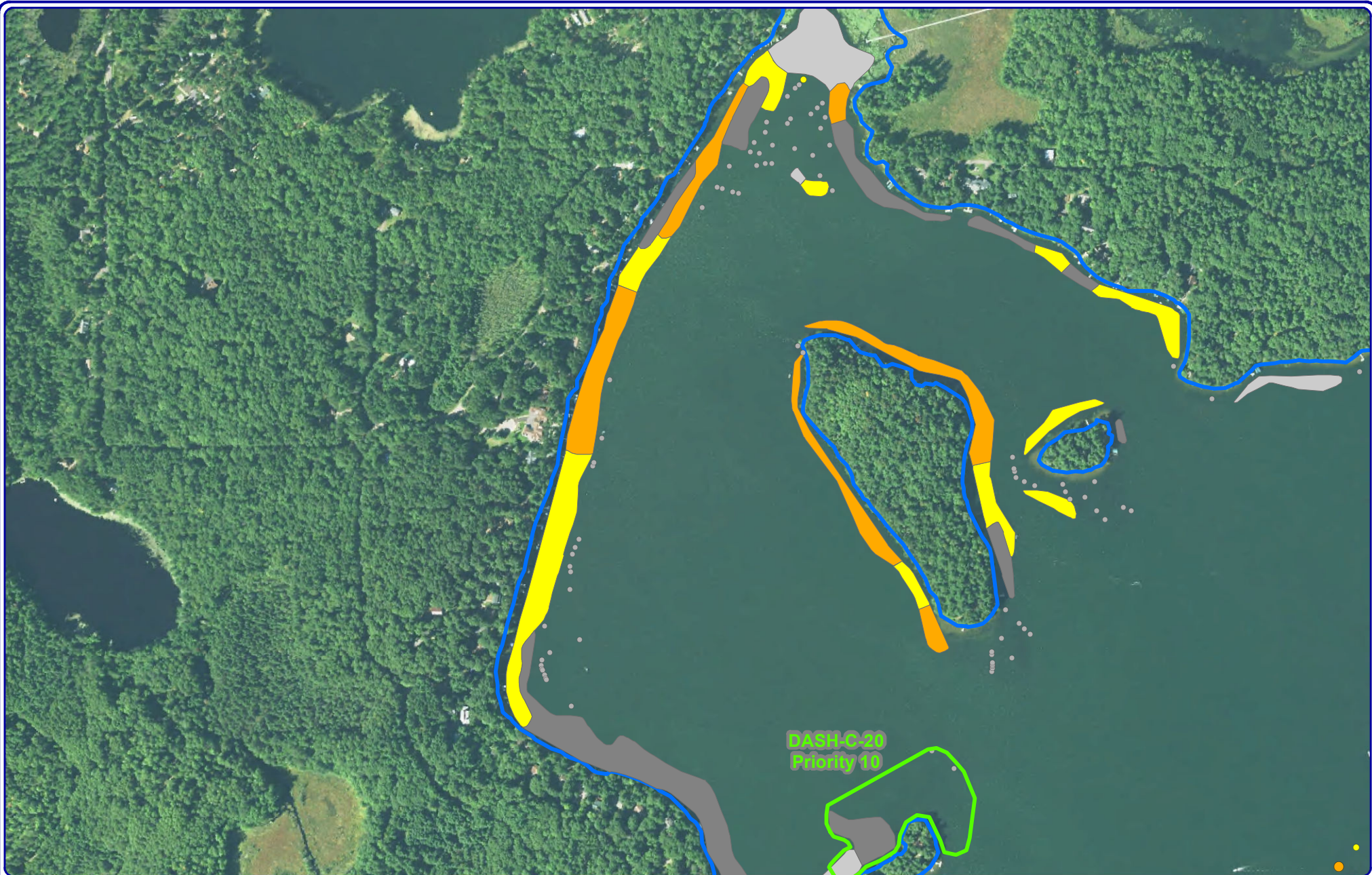
- Single or Few Plants
- Clumps of Plants
- Small Plant Colony
- 2020 DASH Site

Map 1 of 8

Minocqua & Kawaguesaga  
Oneida, Wisconsin

**2020 Preliminary  
DASH Strategy**





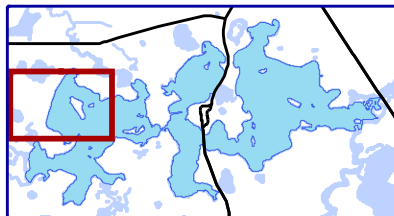
**DASH-C-20  
Priority 10**



660  
Feet

**Onterra LLC**  
Lake Management Planning  
815 Prosper Road  
De Pere, WI 54115  
920.338.8860  
www.onterra-eco.com

**Sources:**  
Roads and Hydro: WDNR  
Bathymetry: WDNR, 1972 - digitized by Onterra  
Orthophoto: NAIP, 2017  
Aquatic Plants: Onterra, 2019  
**Map Date:** October 10, 2019 - EJH



### Legend

- Highly Scattered
- Scattered
- Dominant
- Highly Dominant
- Surface Matting

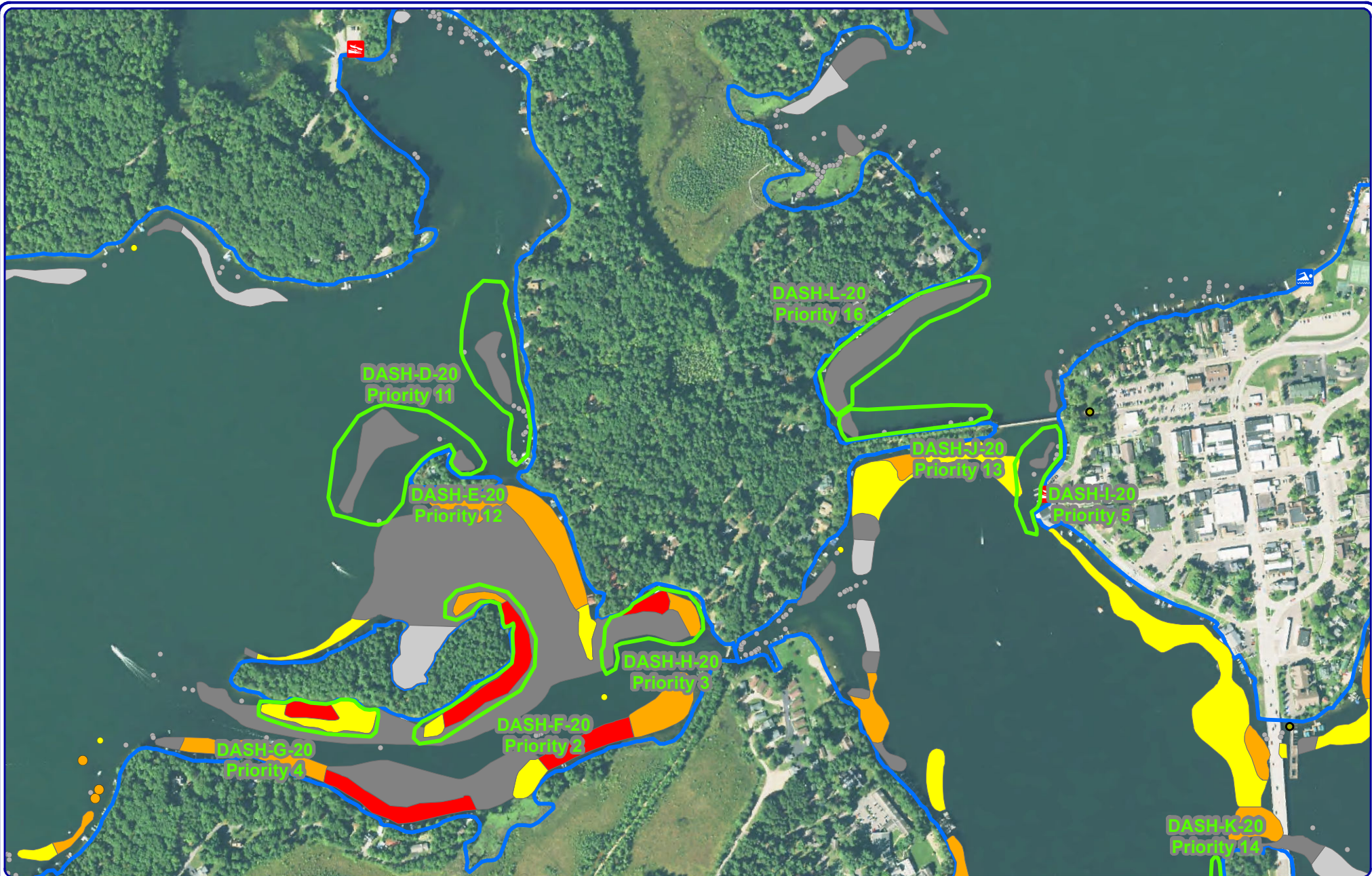
- Single or Few Plants
- Clumps of Plants
- Small Plant Colony
- 2020 DASH Site

Map 2 of 8

**Minocqua & Kawaguesaga**  
Oneida, Wisconsin

**2020 Preliminary  
DASH Strategy**



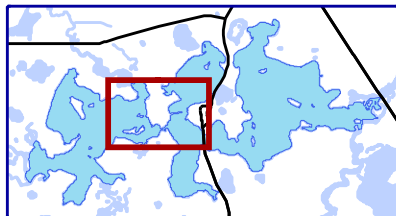


660

Feet

**Onterra LLC**  
Lake Management Planning  
815 Prosper Road  
De Pere, WI 54115  
920.338.8860  
www.onterra-eco.com

**Sources:**  
Roads and Hydro: WDNR  
Bathymetry: WDNR, 1972 -digitized by Onterra  
Orthophoto: NAIP, 2017  
Aquatic Plants: Onterra, 2019  
**Map Date:** October 10, 2019 - E.J.H.



### Legend

- Highly Scattered
- Scattered
- Dominant
- Highly Dominant
- Surface Matting

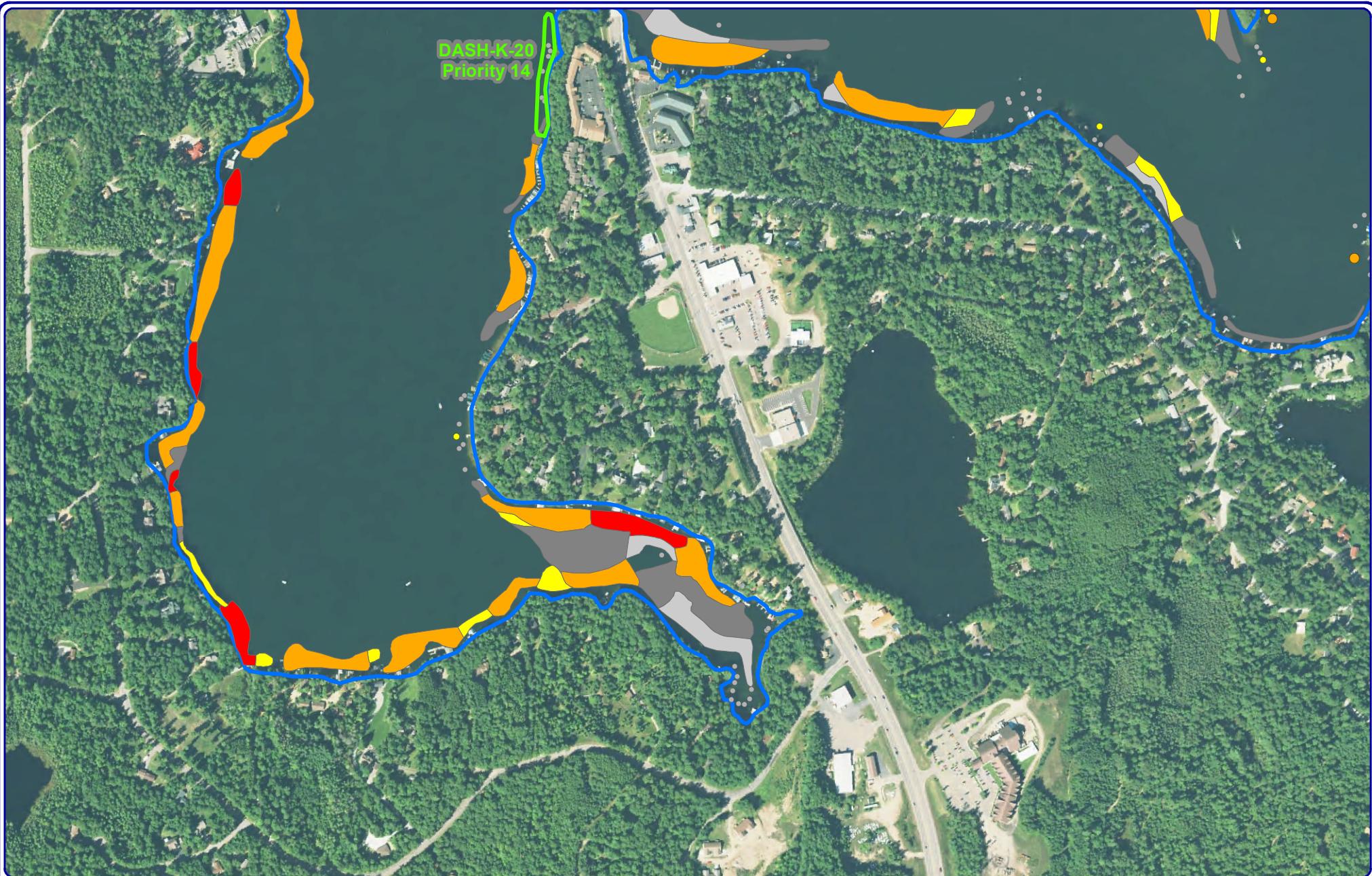
- Single or Few Plants
- Clumps of Plants
- Small Plant Colony
- 2020 DASH Site

Map 3 of 8

Minocqua & Kawaguesaga  
Oneida, Wisconsin

**2020 Preliminary  
DASH Strategy**





**DASH-K-20  
Priority 14**

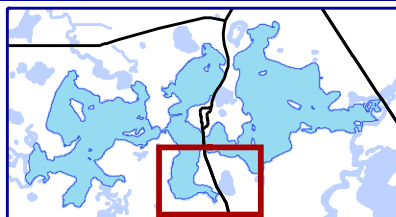


660

Feet

**Onterra LLC**  
Lake Management Planning  
815 Prosper Road  
De Pere, WI 54115  
920.338.8860  
www.onterra-eco.com

**Sources:**  
Roads and Hydro: WDNR  
Bathymetry: WDNR, 1972 -digitized by Onterra  
Orthophoto: NAIP, 2017  
Aquatic Plants: Onterra, 2019  
**Map Date:** October 10, 2019 - EJH



### Legend

- Highly Scattered
- Scattered
- Dominant
- Highly Dominant
- Surface Matting

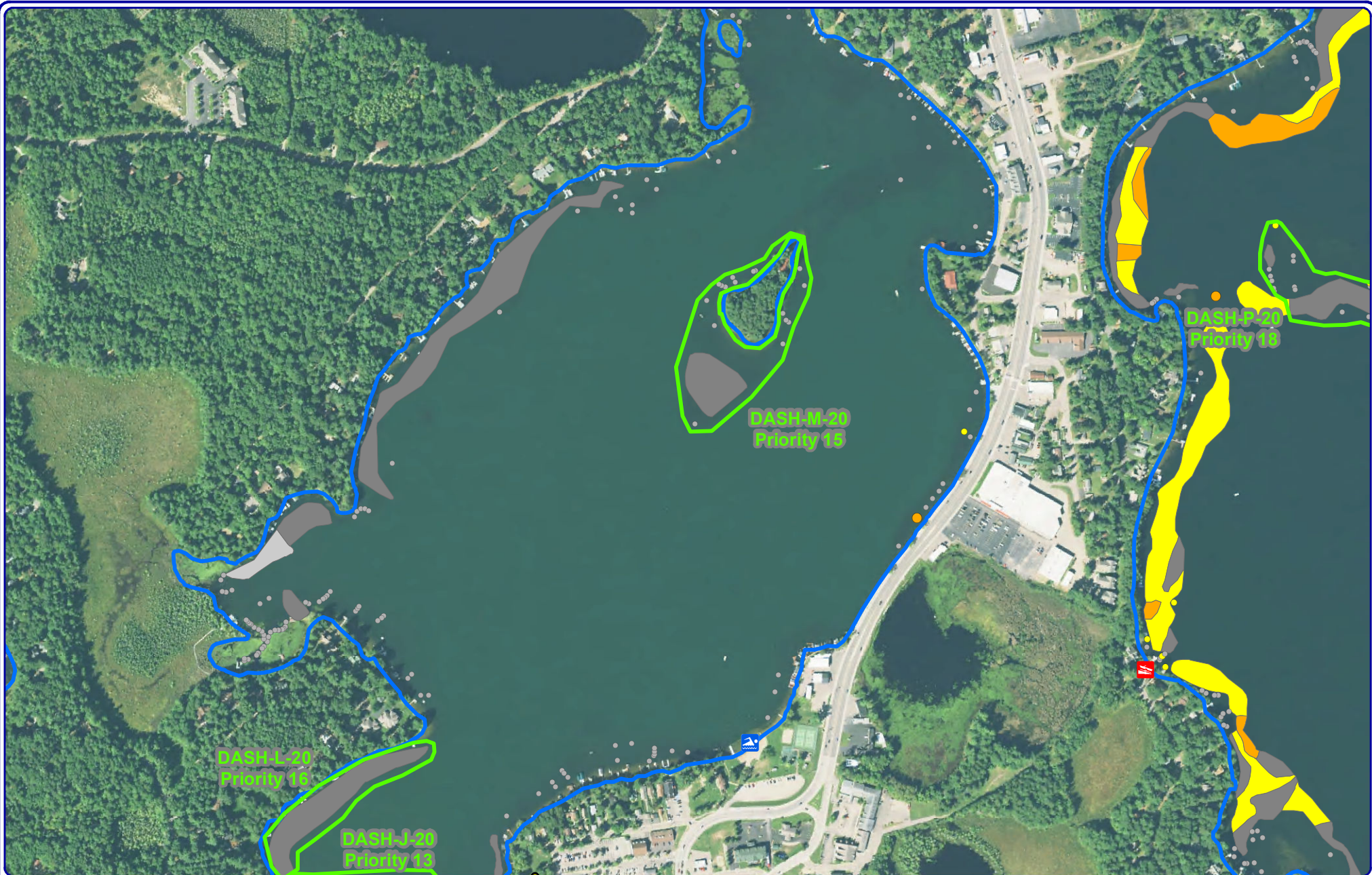
- Single or Few Plants
- Clumps of Plants
- Small Plant Colony
- 2020 DASH Site

Map 4 of 8

Minocqua & Kawaguesaga  
Oneida, Wisconsin

**2020 Preliminary  
DASH Strategy**

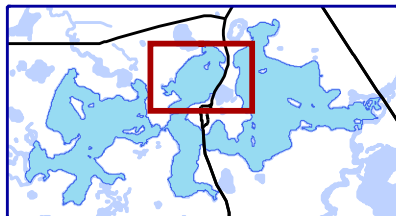




660  
Feet

**Onterra LLC**  
Lake Management Planning  
815 Prosper Road  
De Pere, WI 54115  
920.338.8860  
www.onterra-eco.com

**Sources:**  
Roads and Hydro: WDNR  
Bathymetry: WDNR, 1972 - digitized by Onterra  
Orthophoto: NAIP, 2017  
Aquatic Plants: Onterra, 2019  
**Map Date:** October 10, 2019 - EJH



### Legend

- Highly Scattered
- Scattered
- Dominant
- Highly Dominant
- Surface Matting

- Single or Few Plants
- Clumps of Plants
- Small Plant Colony
- 2020 DASH Site

Map 5 of 8

Minocqua & Kawaguesaga  
Oneida, Wisconsin

**2020 Preliminary  
DASH Strategy**

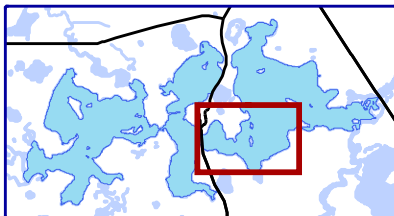




660  
Feet

**Onterra LLC**  
Lake Management Planning  
815 Prosper Road  
De Pere, WI 54115  
920.338.8860  
www.onterra-eco.com

**Sources:**  
Roads and Hydro: WDNR  
Bathymetry: WDNR, 1972 - digitized by Onterra  
Orthophoto: NAIP, 2017  
Aquatic Plants: Onterra, 2019  
**Map Date:** October 10, 2019 - EJH



#### Legend

- Highly Scattered
- Scattered
- Dominant
- Highly Dominant
- Surface Matting

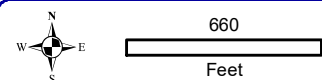
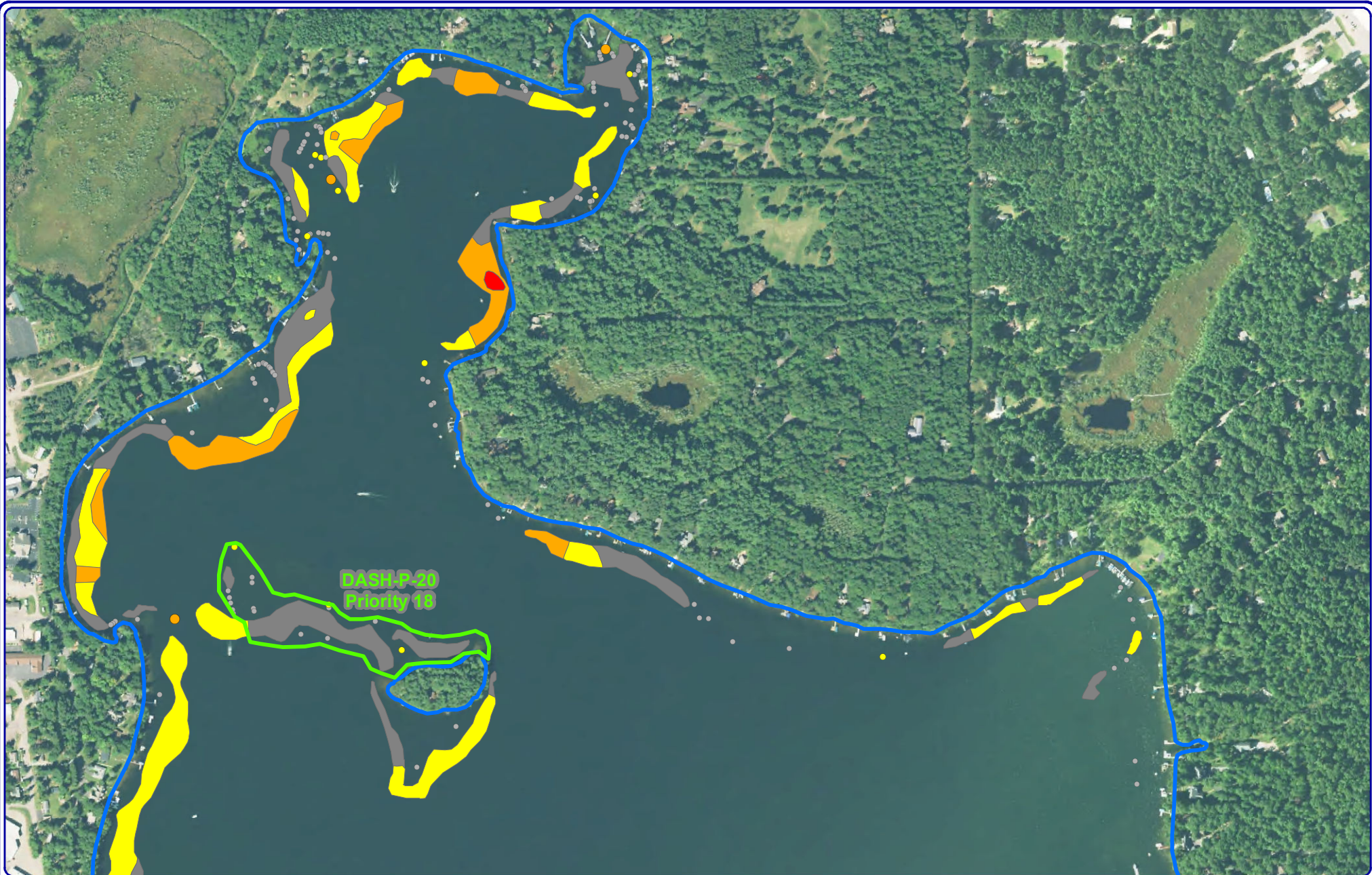
- Single or Few Plants
- Clumps of Plants
- Small Plant Colony
- 2020 DASH Site

Map 6 of 8

Minocqua & Kawaguesaga  
Oneida, Wisconsin

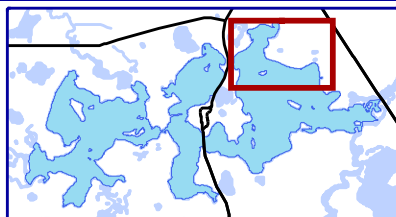
**2020 Preliminary  
DASH Strategy**





**Onterra LLC**  
 Lake Management Planning  
 815 Prosper Road  
 De Pere, WI 54115  
 920.338.8860  
 www.onterra-eco.com

**Sources:**  
 Roads and Hydro: WDNR  
 Bathymetry: WDNR, 1972 -digitized by Onterra  
 Orthophoto: NAIP, 2017  
 Aquatic Plants: Onterra, 2019  
**Map Date:** October 10, 2019 - EJH



- Legend**
- Highly Scattered
  - Scattered
  - Dominant
  - Highly Dominant
  - Surface Matting
  - Single or Few Plants
  - Clumps of Plants
  - Small Plant Colony
  - 2020 DASH Site

Map 7 of 8  
 Minocqua & Kawaguesaga  
 Oneida, Wisconsin  
**2020 Preliminary  
 DASH Strategy**

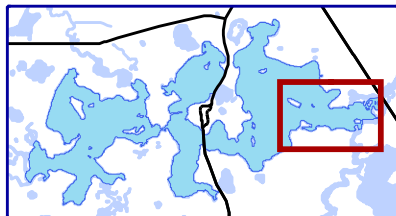




660  
Feet

**Onterra LLC**  
Lake Management Planning  
815 Prosper Road  
De Pere, WI 54115  
920.338.8860  
www.onterra-eco.com

**Sources:**  
Roads and Hydro: WDNR  
Bathymetry: WDNR, 1972 - digitized by Onterra  
Orthophoto: NAIP, 2017  
Aquatic Plants: Onterra, 2019  
**Map Date:** October 10, 2019 - EJH



#### Legend

- Highly Scattered
- Scattered
- Dominant
- Highly Dominant
- Surface Matting

- Single or Few Plants
- Clumps of Plants
- Small Plant Colony
- 2020 DASH Site

Map 8 of 8

Minocqua & Kawaguesaga  
Oneida, Wisconsin

**2020 Preliminary  
DASH Strategy**



### ***2020 Diver Assisted Suction Harvest Strategy***

<b>Site</b>	<b>Priority</b>	<b>Acres Reported</b>	<b>GIS Acres</b>	<b>Average Depth (ft)</b>
DASH-A-20	7	0.3	0.4	7.0
DASH-B-20	9	1.9	1.9	7.0
DASH-C-20	10	3.6	6.3	7.0
DASH-D-20	11	2.4	3.7	6.0
DASH-E-20	12	3.6	5.9	8.0
DASH-F-20	2	1.5	3.3	4.0
DASH-G-20	4	1.4	1.8	6.0
DASH-H-20	3	2.4	2.5	4.0
DASH-I-20	5	0.7	1.6	5.0
DASH-J-20	13	0.7	1.9	7.0
DASH-K-20	14	0.6	0.6	9.0
DASH-L-20	16	2.3	3.8	6.0
DASH-M-20	15	4.4	6.3	7.0
DASH-N-20	16	7.0	5.0	8.0
DASH-O-20	1	2.3	3.9	9.0
DASH-P-20	18	4.9	6.8	9.0
DASH-Q-20	6	2.5	7.7	6.0
DASH-R-20	8	2.0	2.6	6.0
<b>Total</b>		<b>44.5</b>	<b>66.2</b>	