



MKLPA EWM Progress Update

June 2024

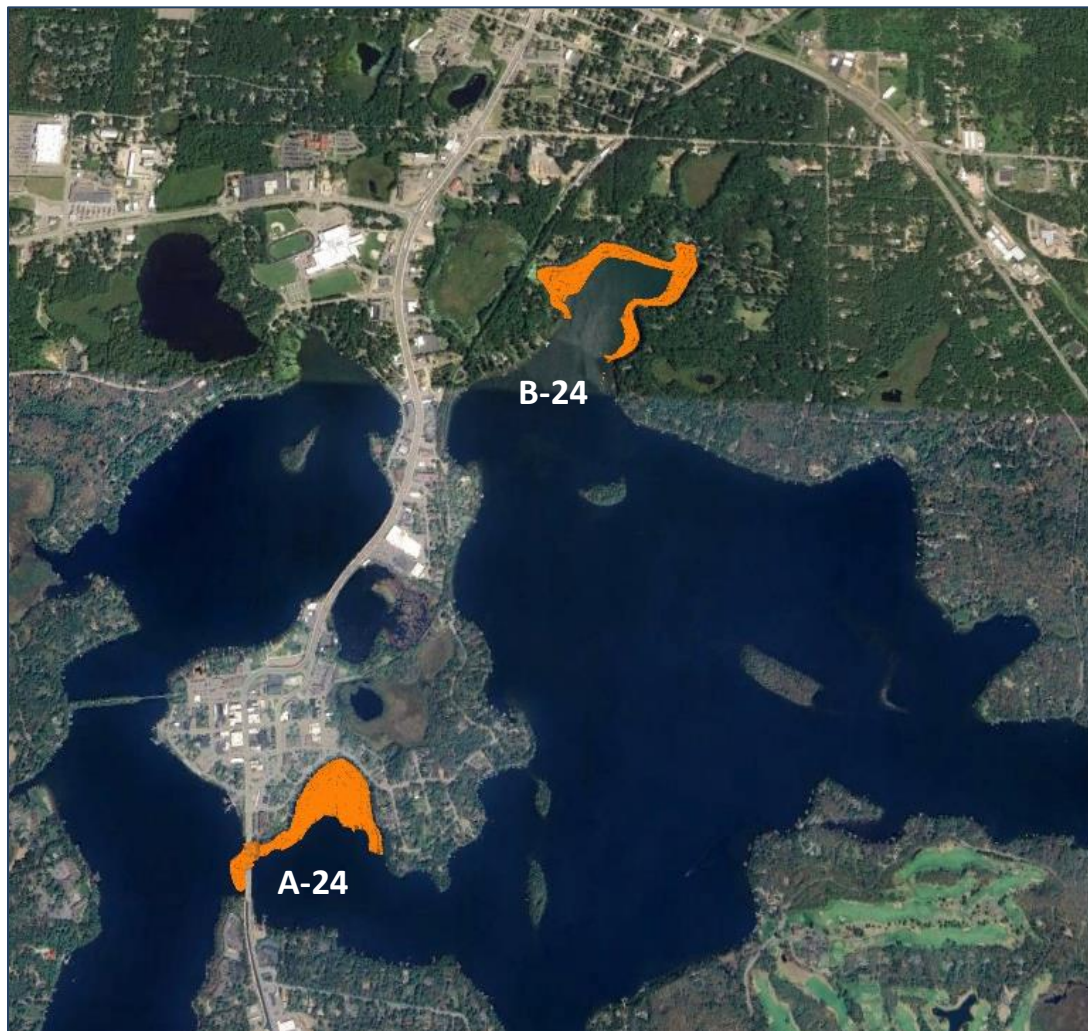
PO Box 1134 Minocqua, WI 54548



MKLPA EWM Management Update

- In 2024 the Minocqua Kawaguesaga Lakes Protection Association (MKLPA) partnered with Aquatic Plant Management LLC (APM) to address the EWM population by conducting herbicide treatment of the EWM population with ProcellaCOR, and manually remove via Diver Assisted Suction Harvesting (DASH), hand harvesting, and mechanical harvesting
- The planned EWM management activities were based on previous years' management productivity, along with a September 2023 EWM mapping survey performed by Onterra LLC
- Early observations indicate that there is significantly more EWM present in 2024 than identified in the 2023 late season survey
- On June 21st, 2024, APM treated a total of 35.1 acres at two sites on Lake Minocqua with ProcellaCOR under ideal treatment conditions
- There are a total of 26.5 days of DASH and 29 days of hand harvesting in the plan to target the 14 sites as prioritized by MKLPA and APM
- Beginning in June, APM has performed ~7.6 days of DASH and 4.7 days of hand harvesting at 6 sites, removing a total of ~620 cubic feet of EWM to date
- Starting on June 26th, APM will do the first of multiple mechanical harvests of 2 sites on Lake Minocqua
- APM will potentially conduct mechanical harvesting at an additional site(s) on Lake Kawaguesaga pending alignment with the MKLPA

ProcellaCOR Treatment Summary



Treatment Overview and Conditions

- APM treated Lake Minocqua **with ProcellaCOR at 2 sites** on June 21st, 2024
- The treatment occurred over a **~4.5 hour period** from 5:39 am to 10:10 am
- Ambient air temperature was 62 degrees with a **western wind** averaging 0.0 miles per hour at the beginning of treatment, and the water temperature was 65.6 degrees

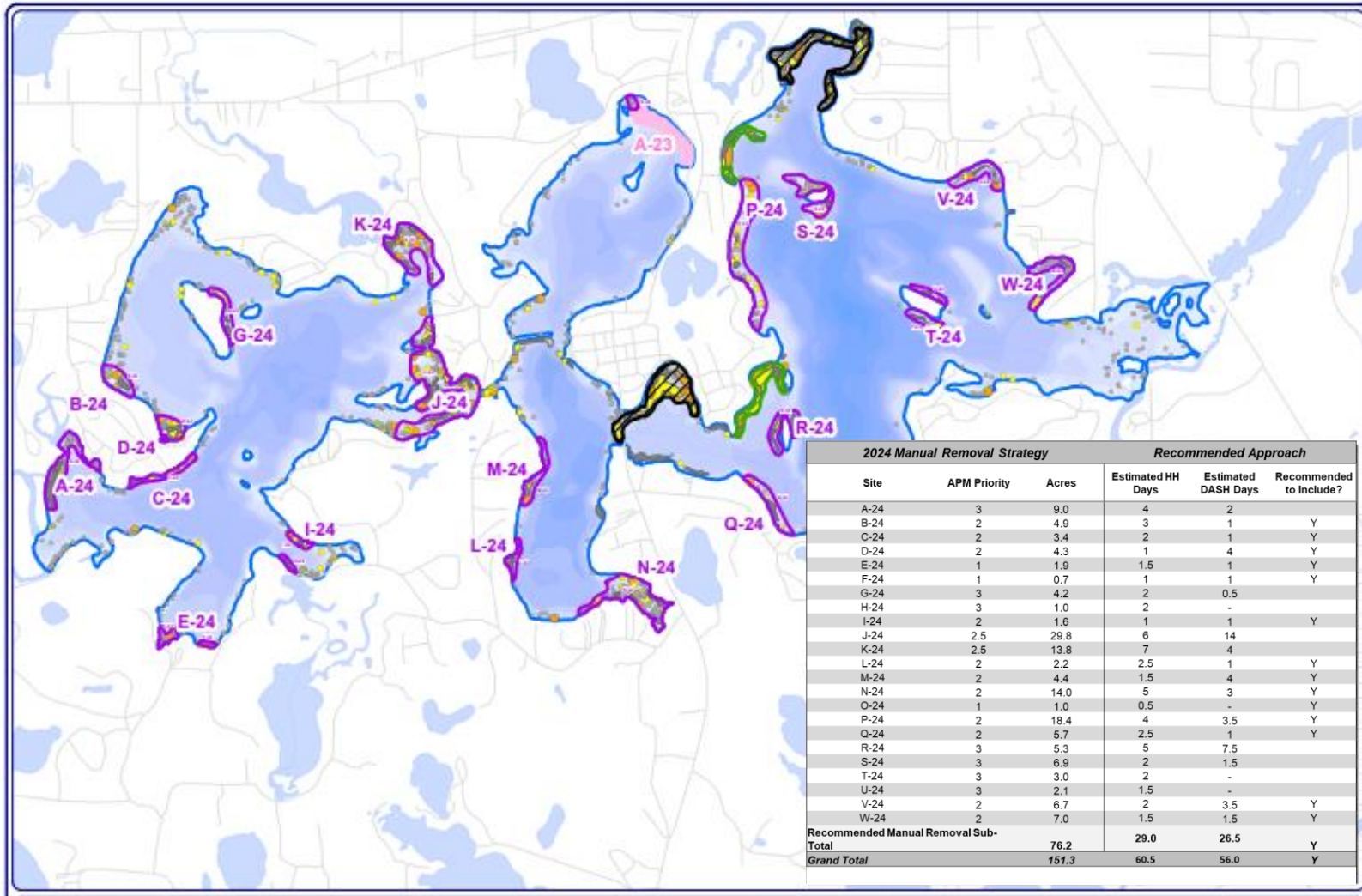
Site Name	Treated Acres	PDUs
A-24	16.6	664
B-24	18.5	555
Total	35.1	1,219



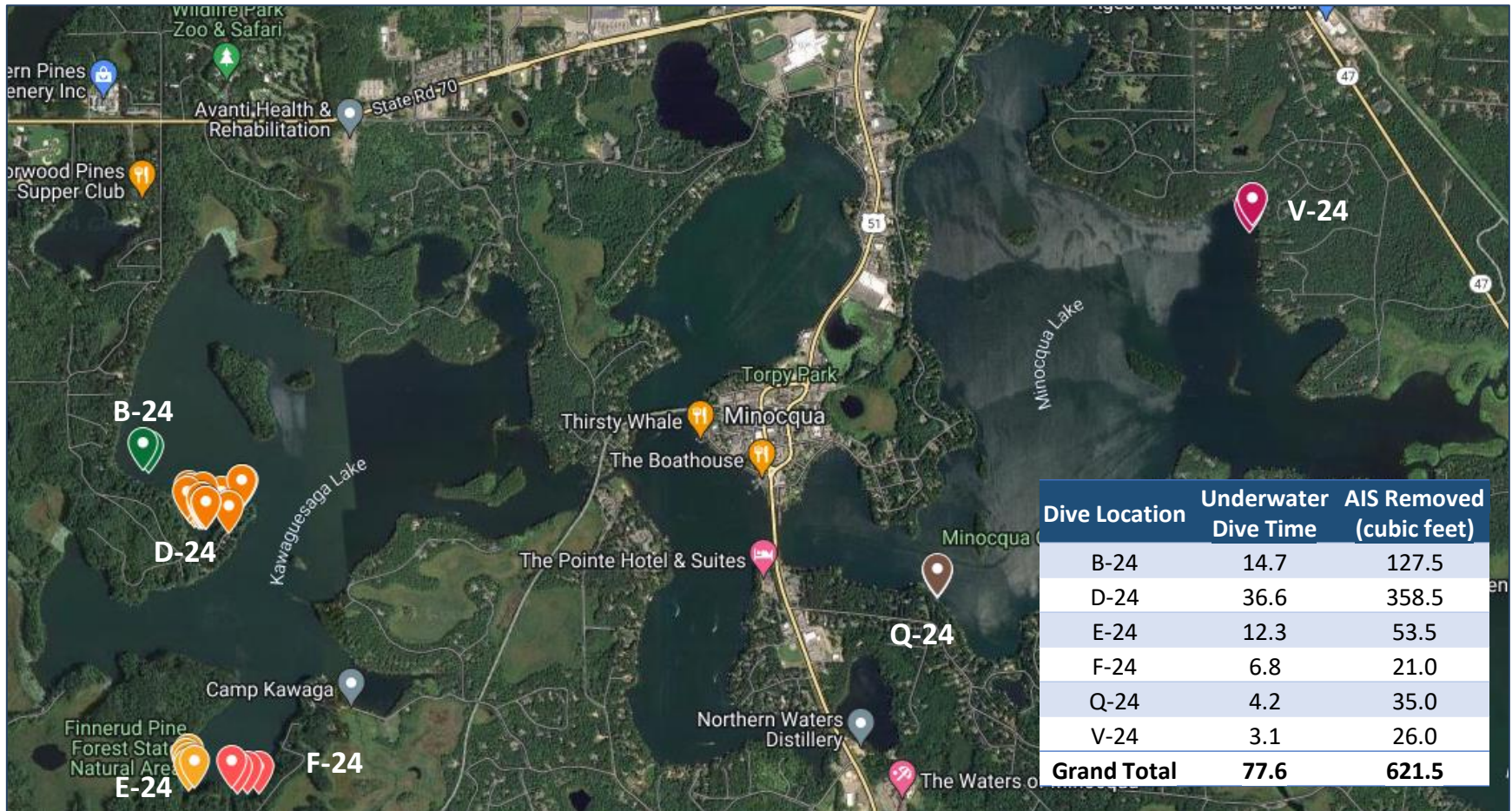
MKLPA Manual Removal Strategy

<i>2024 Manual Removal Strategy</i>				<i>Recommended Approach</i>		
Site	APM Priority	Notes	Acres	Estimated HH Days	Estimated DASH Days	Recommended to Include?
A-24	3	Low boat traffic	9.0	4	2	
B-24	2		4.9	3	1	Y
C-24	2		3.4	2	1	Y
D-24	2		4.3	1	4	Y
E-24	1		1.9	1.5	1	Y
F-24	1		0.7	1	1	Y
G-24	3		4.2	2	0.5	
H-24	3	Native density slows progress	1.0	2	-	
I-24	2		1.6	1	1	Y
J-24	2.5	Likely future herbicide	29.8	6	14	
K-24	2.5	Likely future herbicide	13.8	7	4	
L-24	2		2.2	2.5	1	Y
M-24	2		4.4	1.5	4	Y
N-24	2		14.0	5	3	Y
O-24	1		1.0	0.5	-	Y
P-24	2		18.4	4	3.5	Y
Q-24	2		5.7	2.5	1	Y
R-24	3	Likely adjacent to future herbicide	5.3	5	7.5	
S-24	3	Low boat traffic	6.9	2	1.5	
T-24	3	Low boat traffic, minimal riparians	3.0	2	-	
U-24	3	Low boat traffic, minimal riparians	2.1	1.5	-	
V-24	2		6.7	2	3.5	Y
W-24	2		7.0	1.5	1.5	Y
Recommended Manual Removal Sub-Total			76.2	29.0	26.5	Y
Grand Total			151.3	60.5	56.0	Y

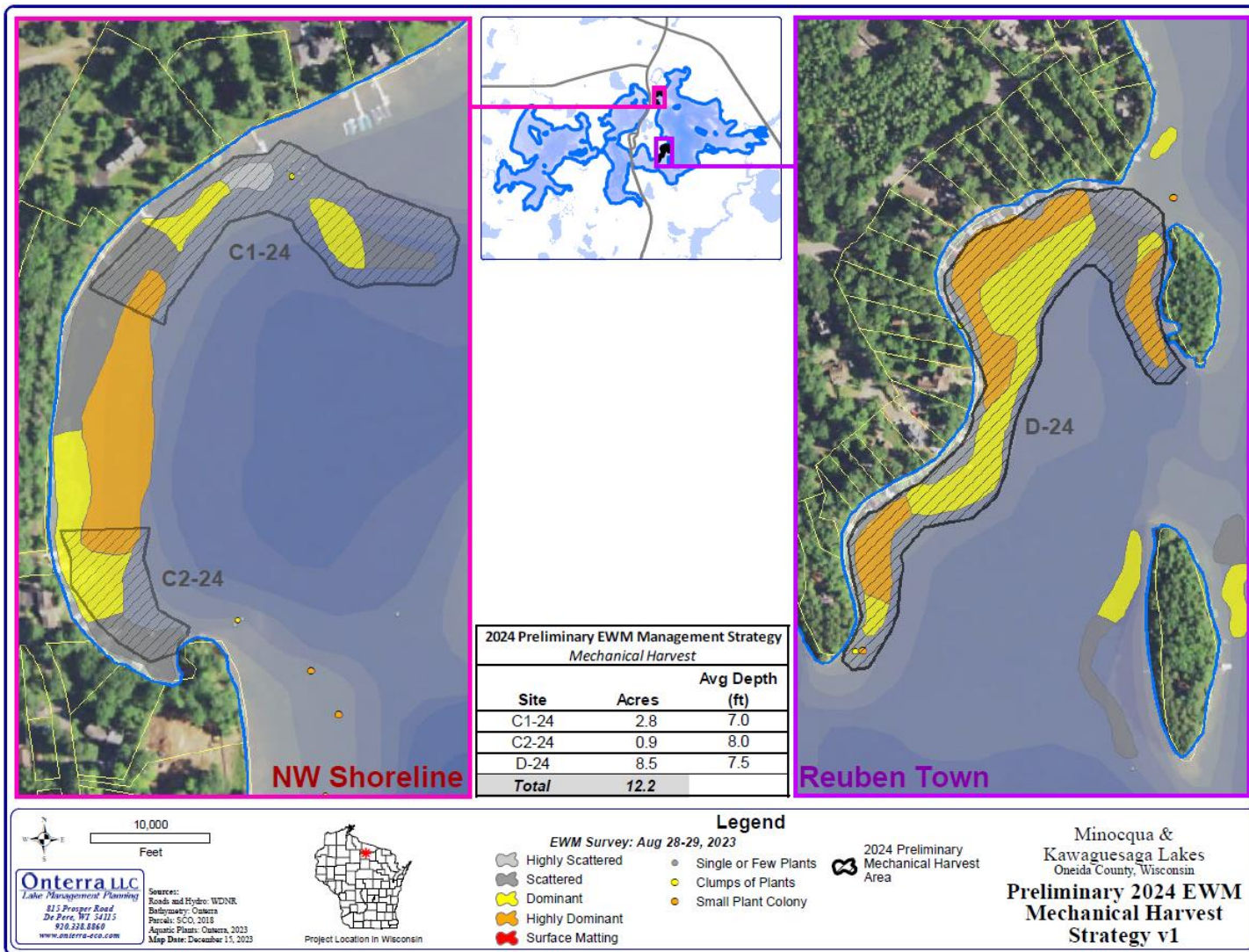
MKLPA Manual Removal Map



MKLPA EWM Removal Summary | June 2023



MKLPA Mechanical Harvest Plans





Appendix

Onterra Final ProcellaCOR Map

